

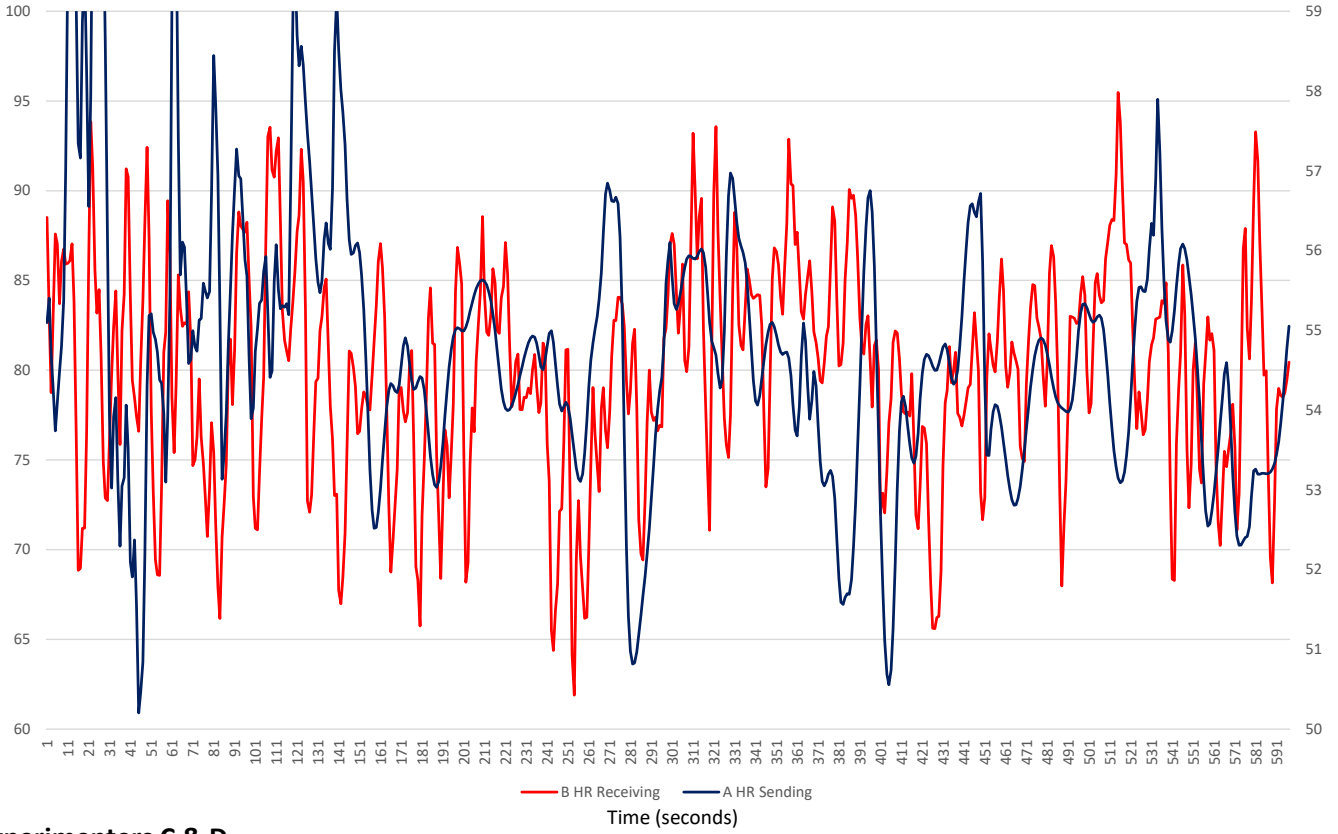
Summary of Social Coherence and HRV Synchronisation Research Day Results

Appendix

Local HRV Synchronisation Examples

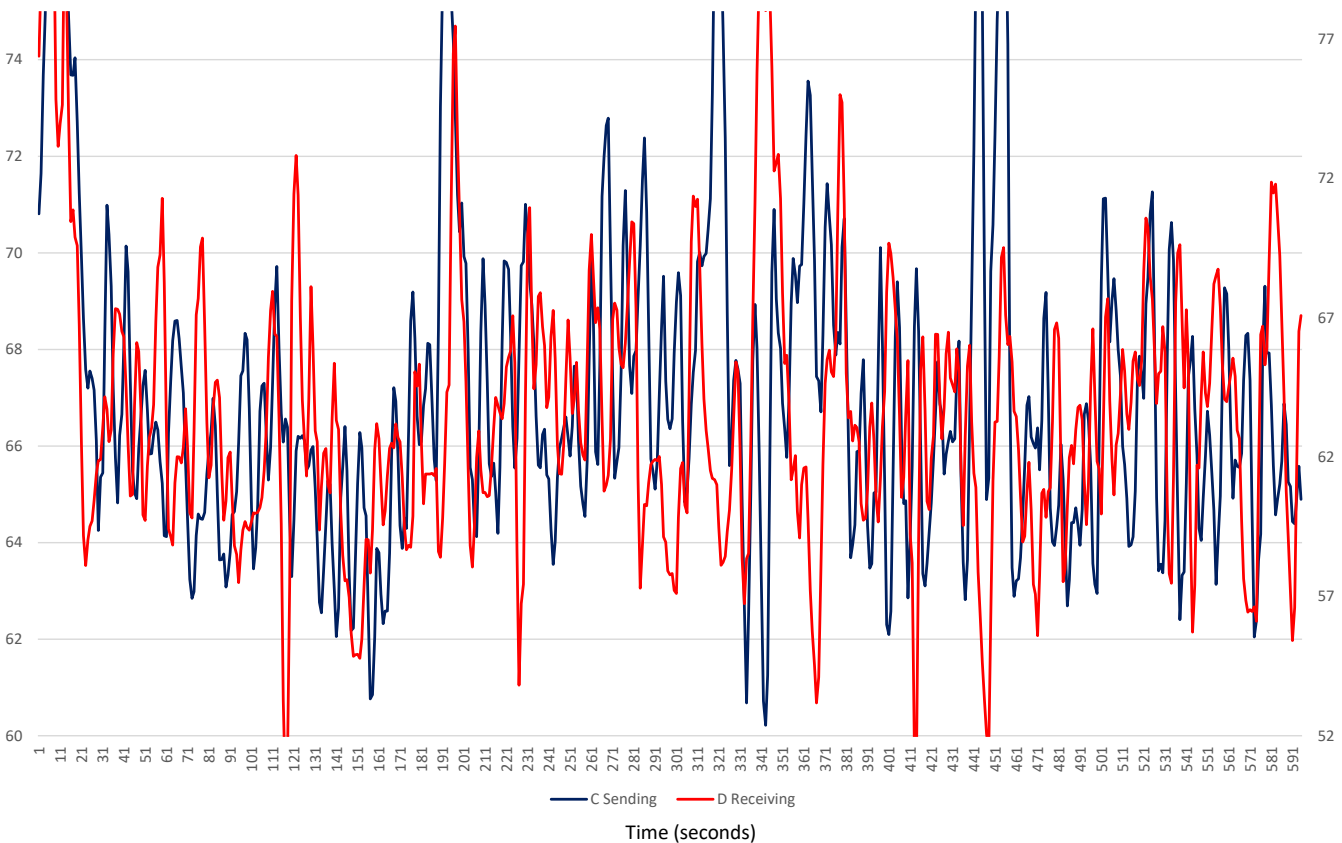
Experimenters A & B

Expt. AB3 Heart Rate - A sending, B receiving



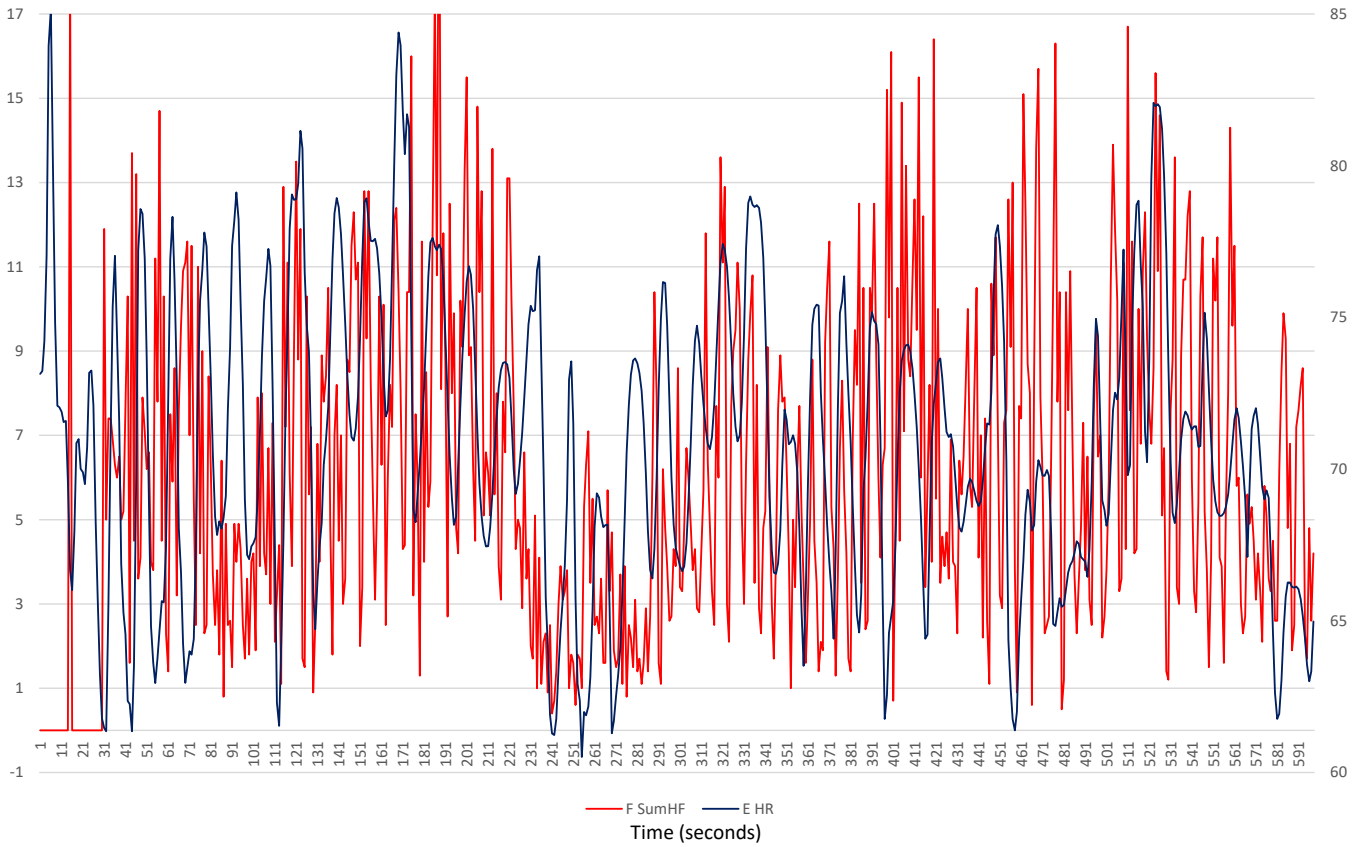
Experimenters C & D

CD3 Heart Rate - C Sending, D Receiving



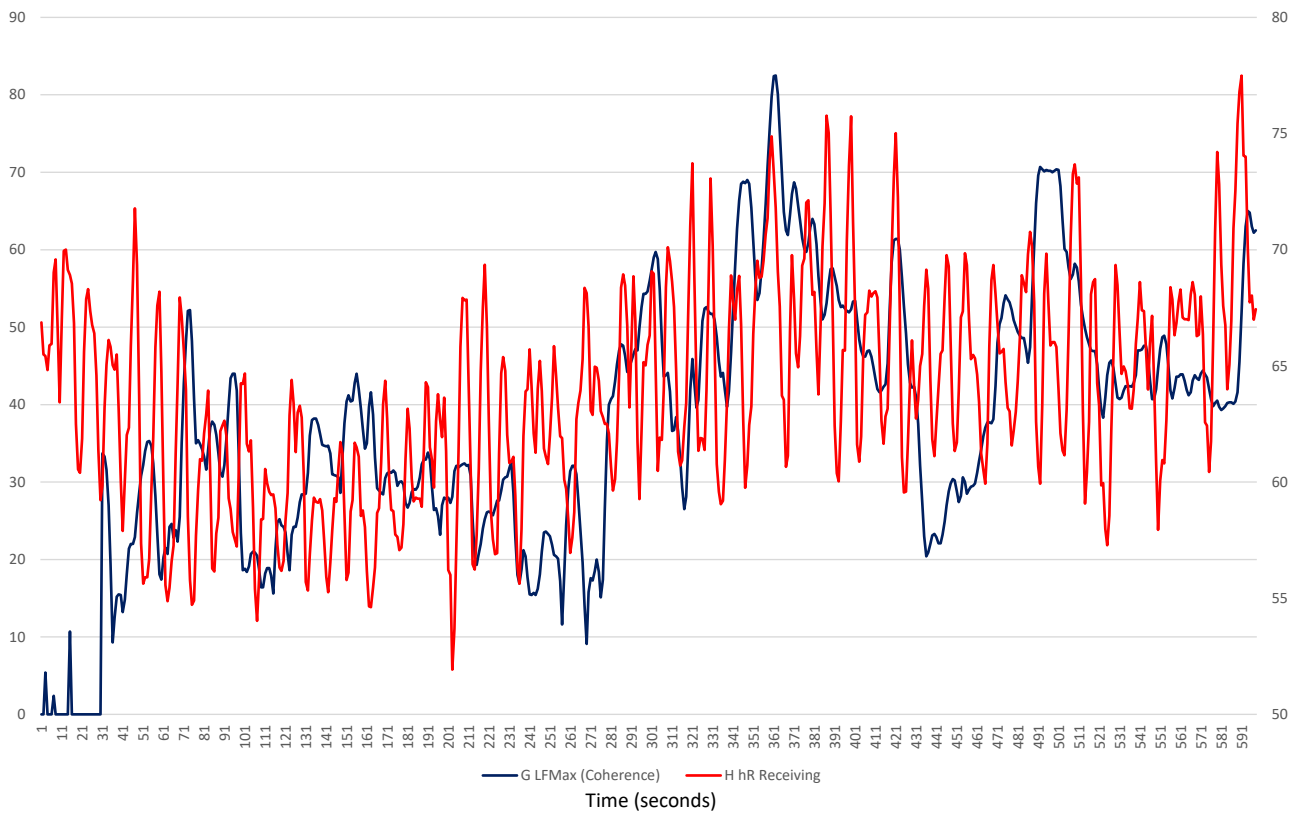
Experimenters E & F

EF2 - Both focusing - F SumHF vs E HR



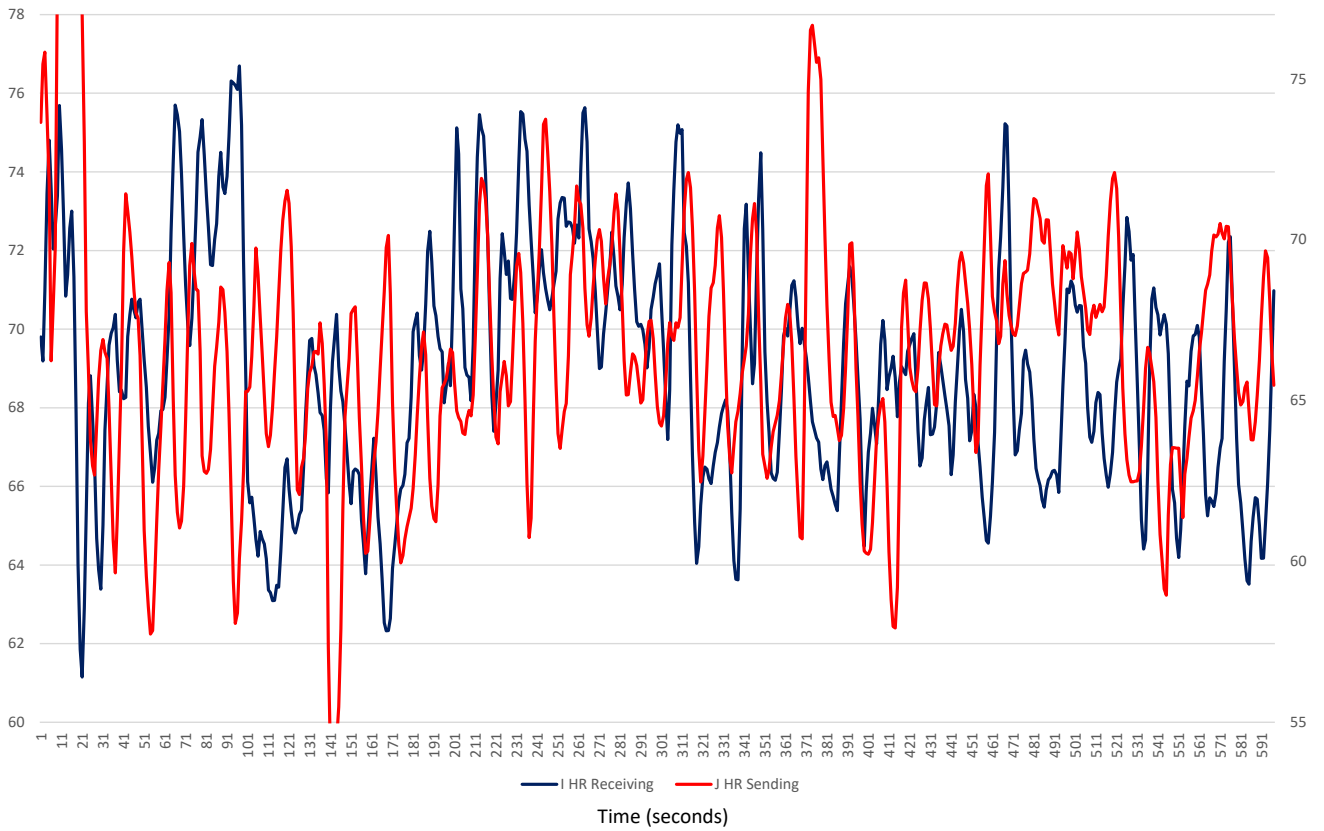
Experimenters G & H

Expt. GH9 - G Sending, H Receiving



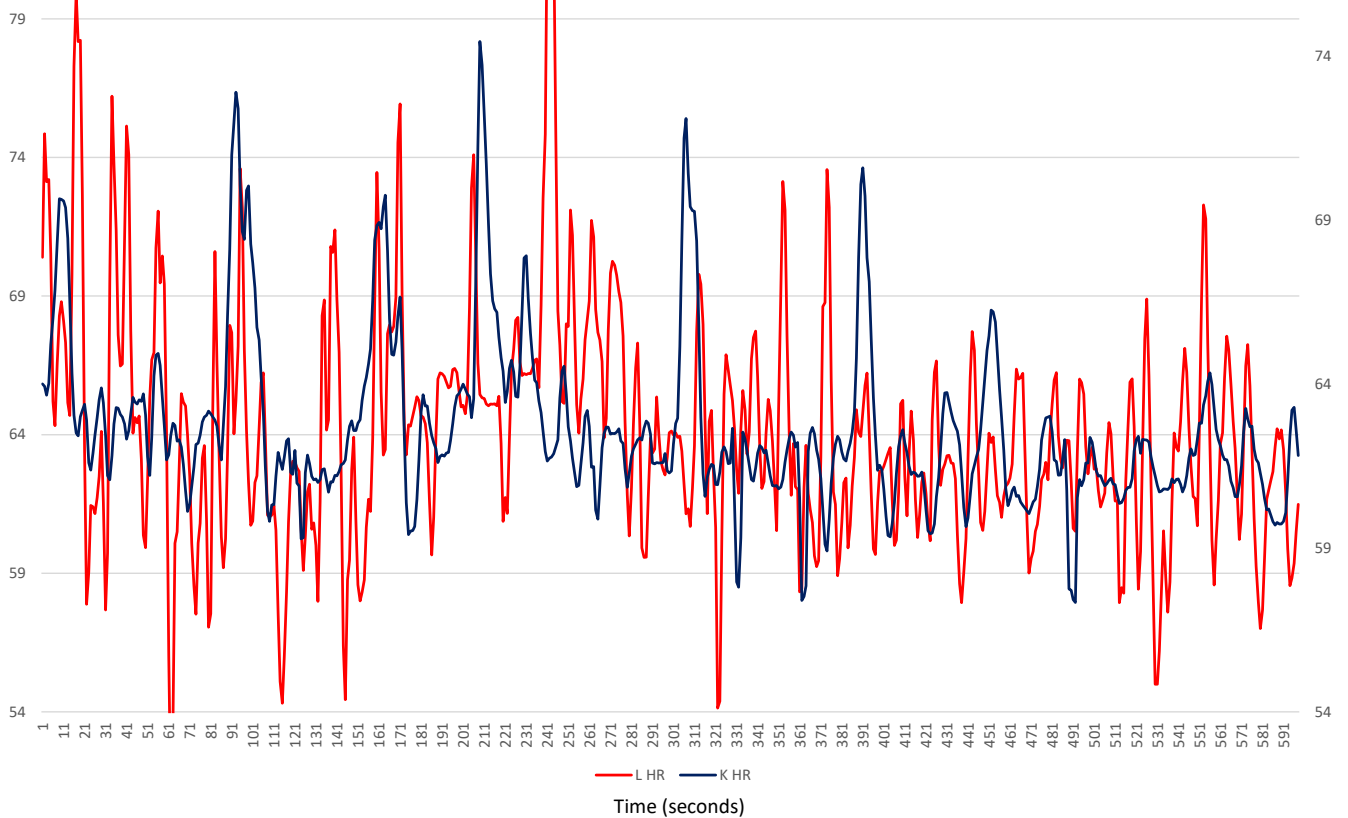
Experimenters I & J

Expt. IJ4 Heart Rate - J Sending, I Receiving



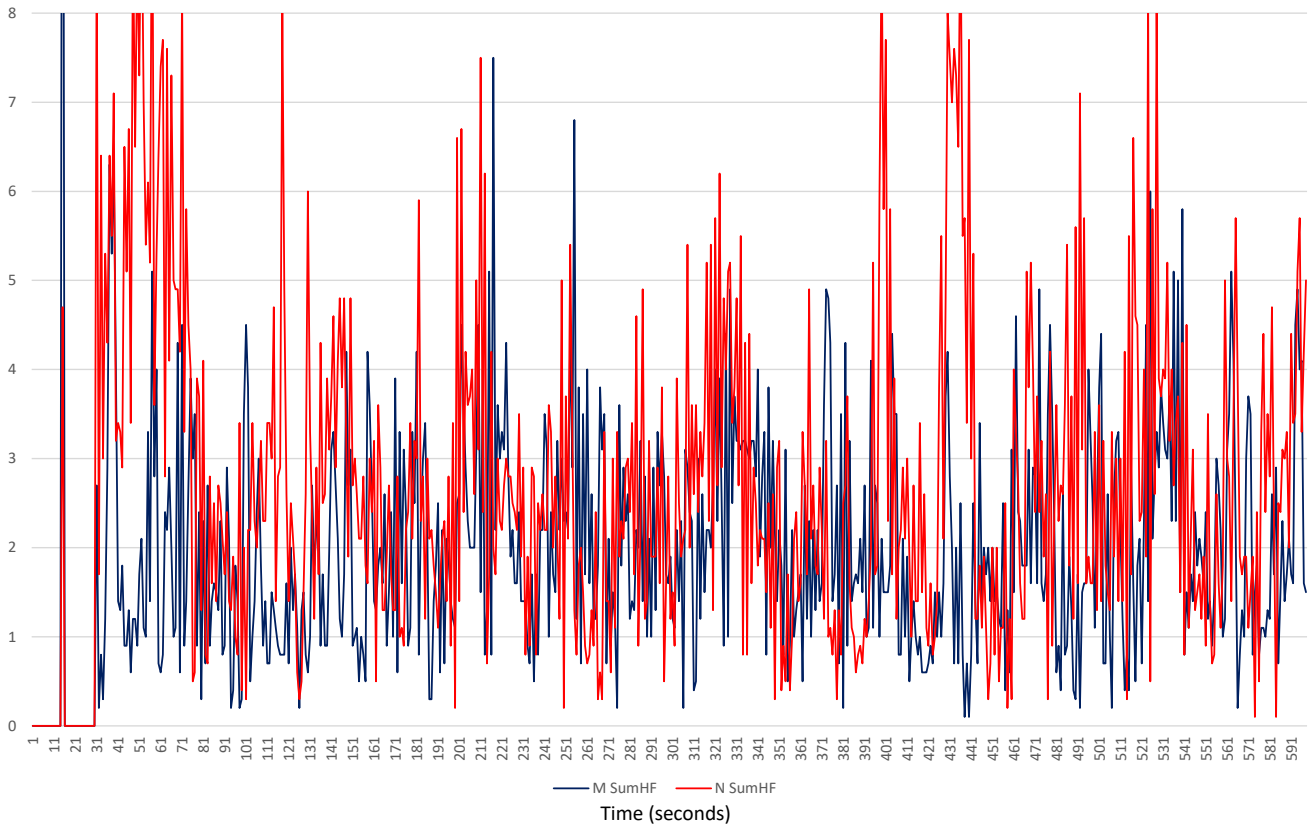
Experimenters K & L

KL1 Heart Rate - No Focus



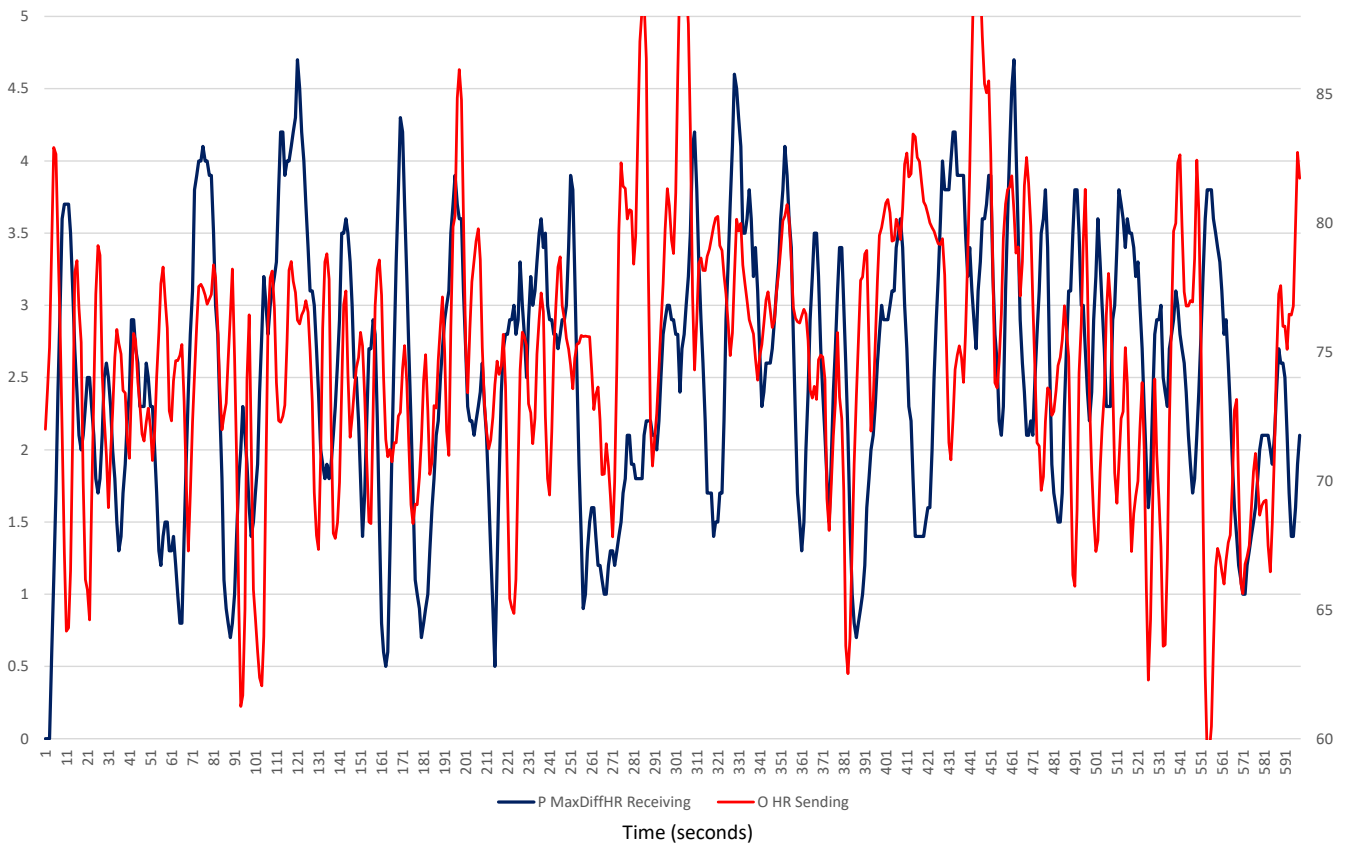
Experimenters M & N

MN4 N Sending, M Receiving - SumHF



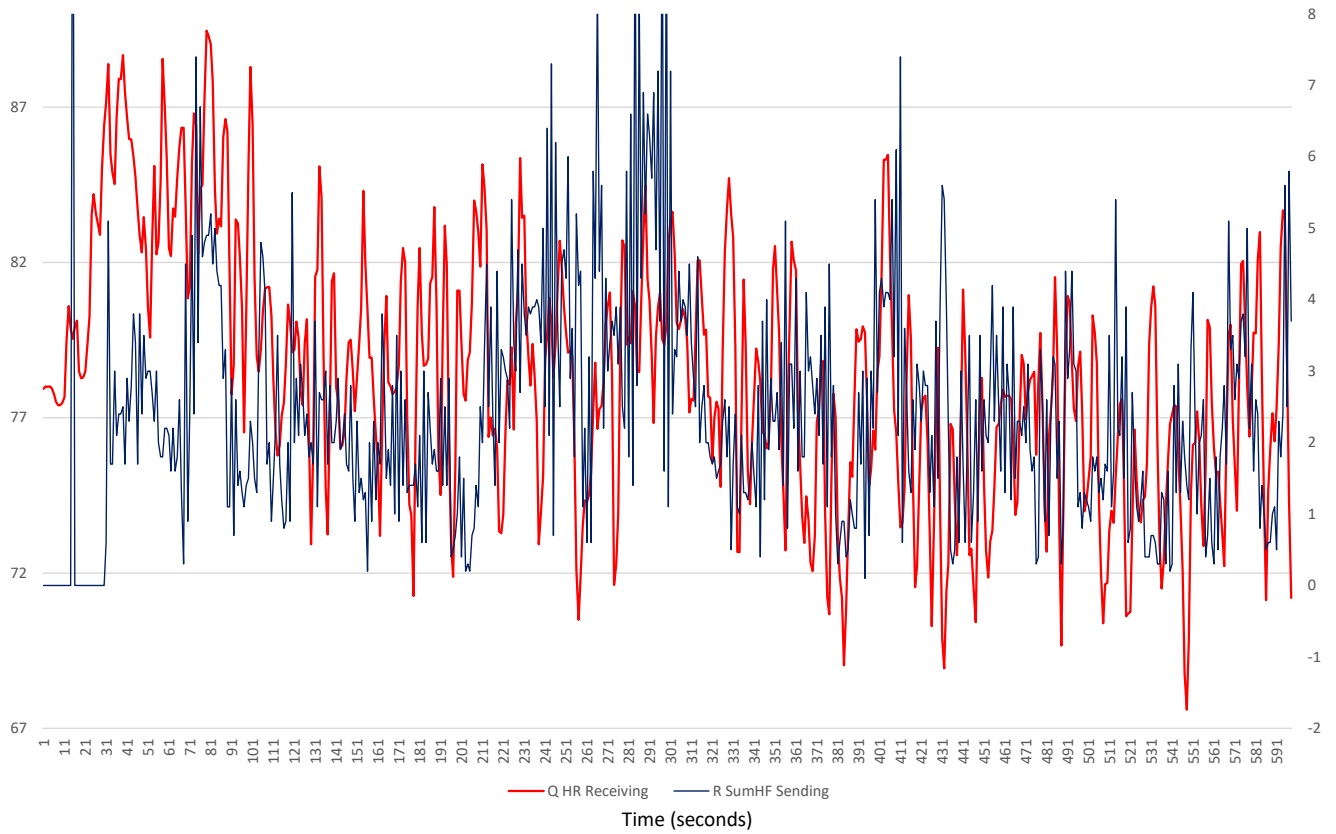
Experimenters O & P

OP8 P Receiving, O Sending



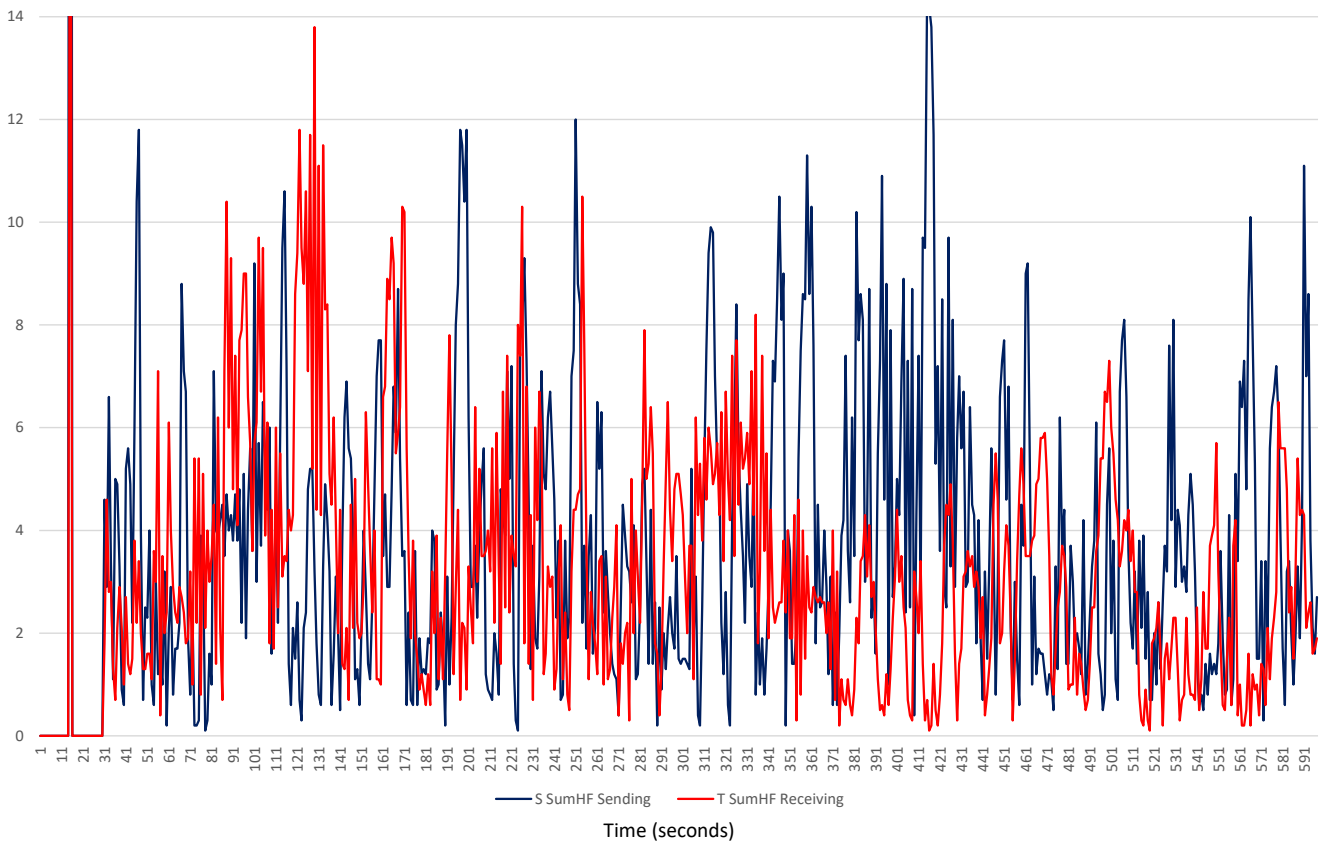
Experimenters Q & R

QR4 R sending, Q receiving. R SumHF vs Q HR



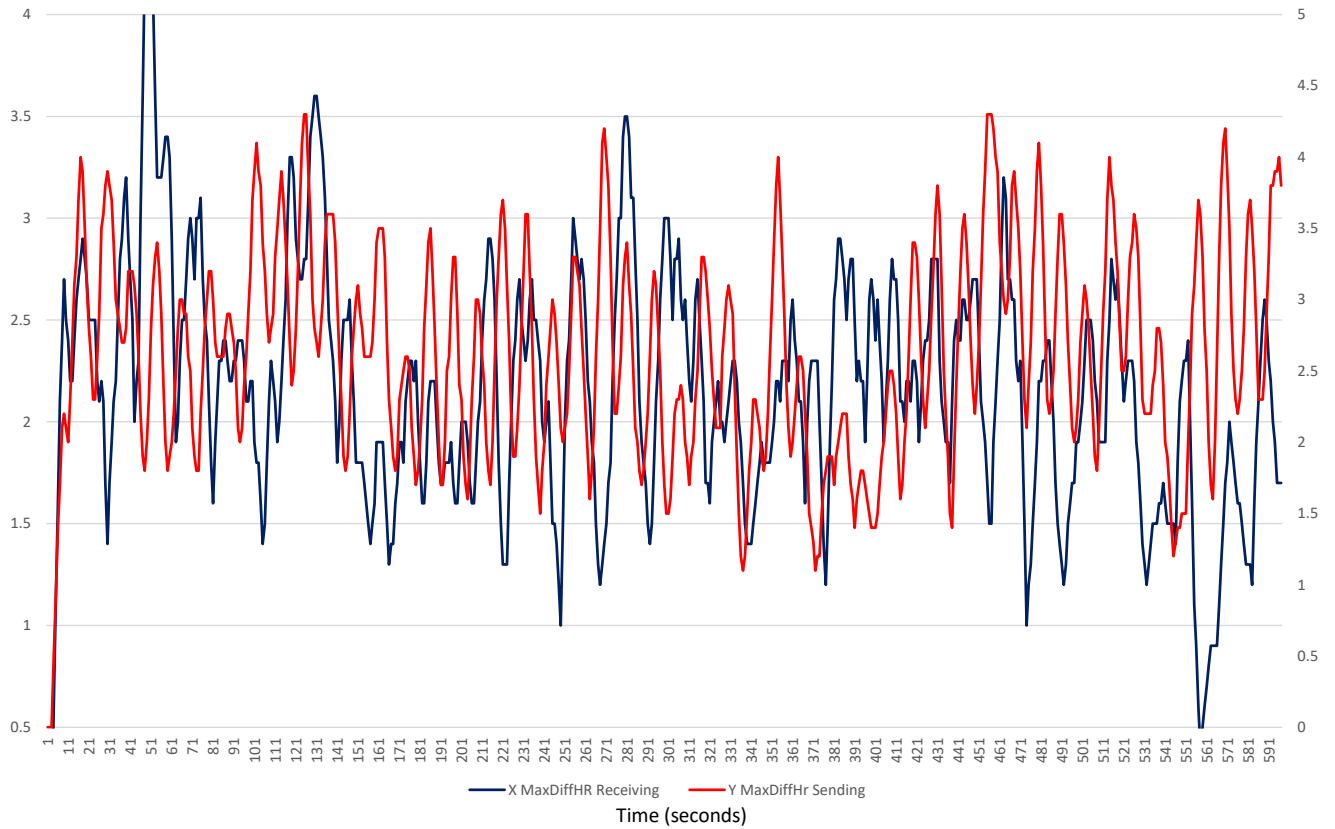
Experimenters S & T

ST3 SumHF - S Sending, T Receiving



Experimenters X & Y

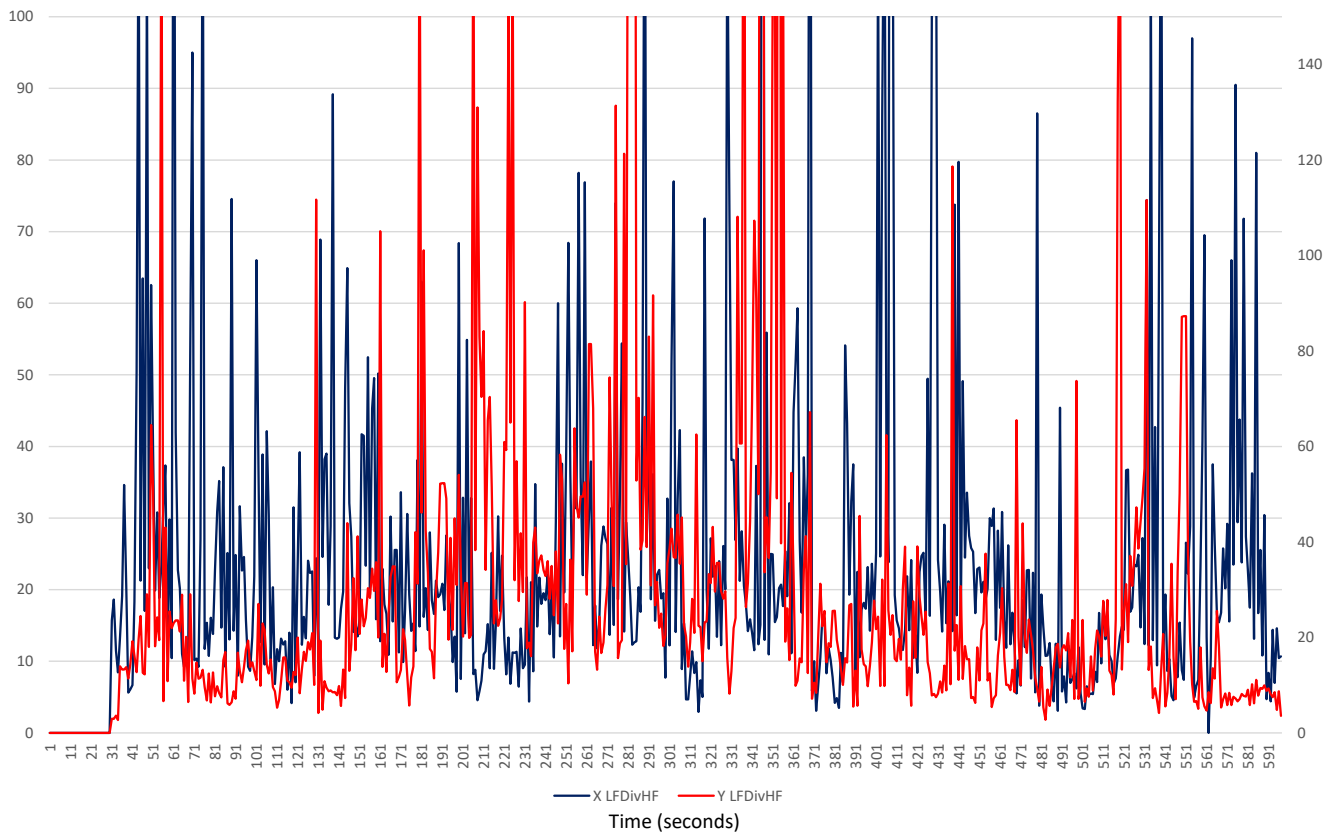
Expt XY9 - MaxDiffHr (HRV Amplitude)



Experimenters X & Y

Nonlocal HRV Synchronisation Example

SSNL1 Nonlocal - LF/HF



Separation distance a few hundred metres in different restaurants in London.

No verbal or other communication devices operating.